

Angle sensor MEMS, type 0804

Robust MEMS technology for your angle measuring

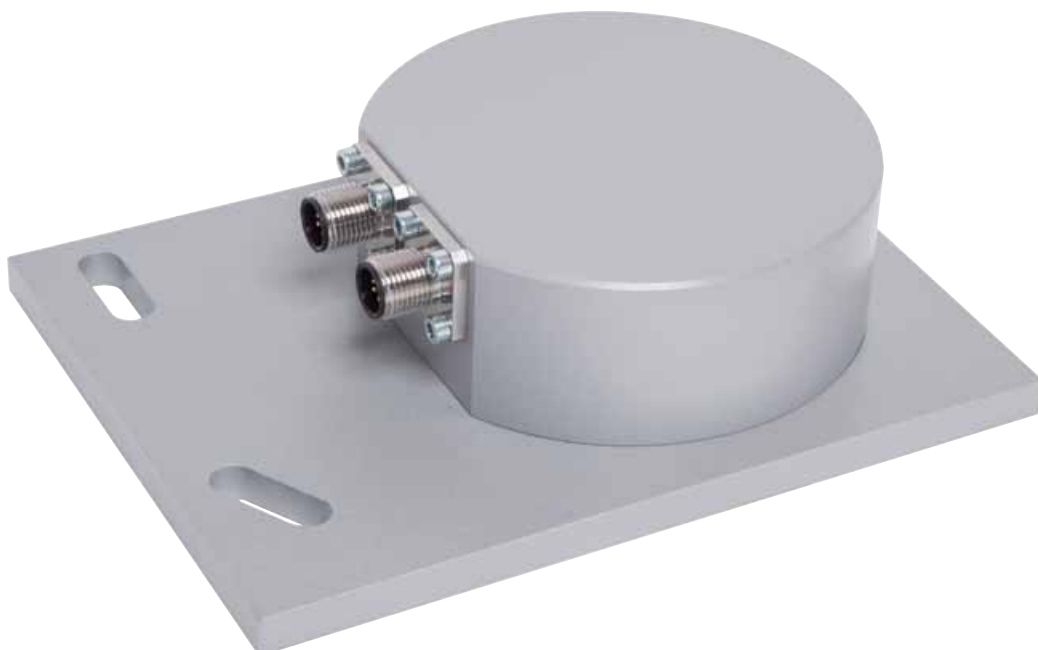
BROSA angle sensors are characterised by their high long-term stability and accuracy. The high-quality finish and the use of robust MEMS technology provide decisive advantages. The MEMS technology used can cope with impacts of up to 3500 g during operation. Other impressive characteristics include a high measuring accuracy, extreme vibration resistance as well as the low installation height for many different applications.

Applications

- Cranes
- Construction machines
- Machine construction

Features

- Customer-specific design
- Integrated amplifier
- Temperature compensated
- High EMC resistance



Angle sensor MEMS, type 0804

Technical data

Resolution	0,01°
Accuracy	≤ ±0,3°
Measurement range	0 to 360°, 0 to 90°, 0 to 180° other optional measurement ranges
Linearity error	≤ ±0,1°
Hysteresis	≤ ±0,1°
Reproducibility	≤ ±0,1°
Temperature range	-40 to +80 °C
Temperature coefficient	≤ 0,0046 % / °K
Supply voltage	9 to 36 VDC
Output signal	4 bis 20 mA, optional redundant CANopen, optional Safety, redundant
Protection class	IP 67 according to DIN EN 60529
Interference immunity	200 V/m HF, 100 mA BCI according to ISO 11452, DIN EN 61000-4, ISO 7637
Emission	DIN EN 55025
Climate tests	DIN EN 60068-2
Vibration resistance	DIN EN 60068-2
Electrical connections	M12x1, 4-pins (5-pins)
Electrical protection classes	Reverse polarity protection, overvoltage protection and short- circuit protection
Material	Aluminium, saltwater-proof

Options

Safety classification acc. to DIN EN ISO 13849-1 PL c, PL d, PL e*

*Used in parent systems according to DIN EN ISO 13849-1



ISO 9001:2008
ISO 14001:2004



94/9/EG